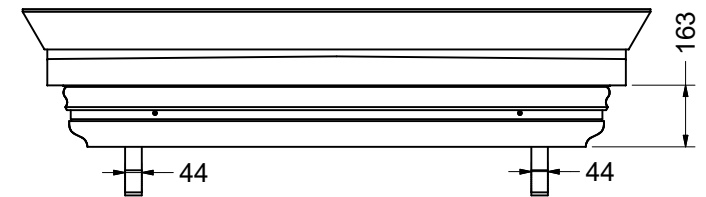


70



TITLE WILMSLOW CANOPY WITH ZINC TOP COVER

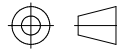
Canopy Products Ltd

Blackwood Mill
Blackwood Road
Bacup OL13 0PZ
Tel 01706 82 2665
www.canopyproducts.co.uk

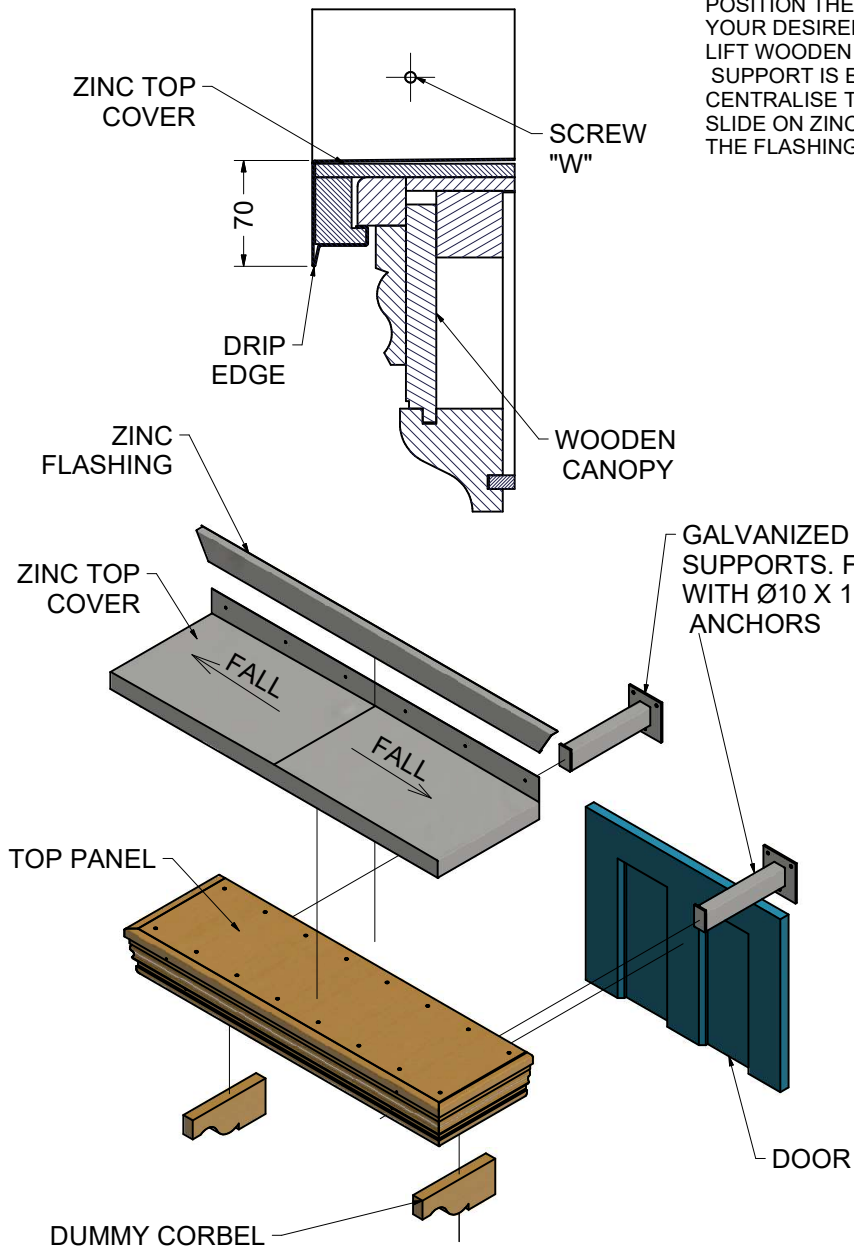
MATERIAL
TREATMENT DIP TREATED

SCALE NTS DRN user DATE 26-May-20

DRG. No. F-WILM-ZINC-1470-440

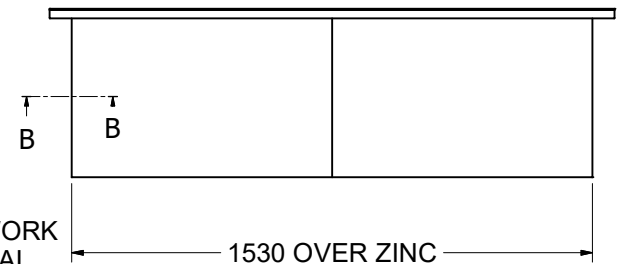


SECTION B-B SHOWING
ZINC TOP COVER LOCATION

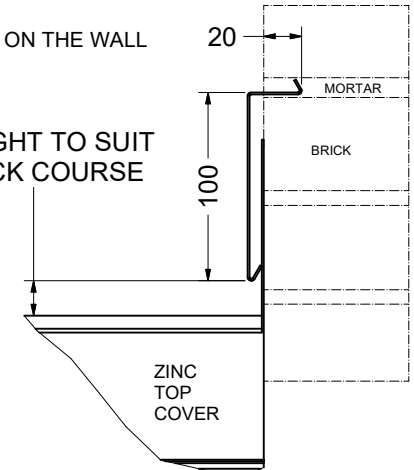


ASSEMBLY INSTUCTIONS

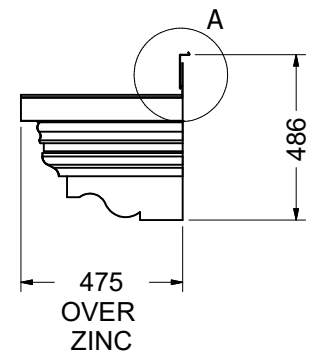
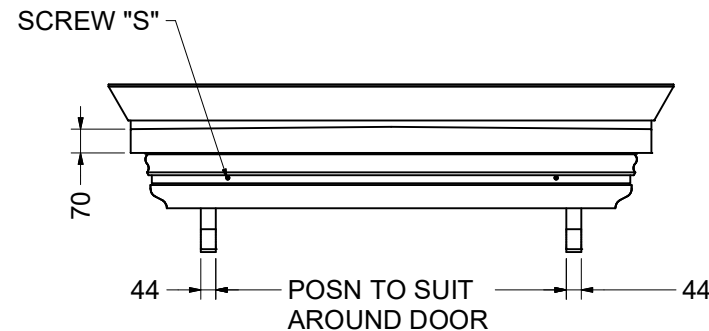
DECIDE YOUR PREFERRED LOCATION OF THE DUMMY CORBELS ON THE UNDERSIDE OF THE CANOPY AND FIX WITH SCREWS. ACCESS FOR SCREWS IS OBTAINED BY REMOVING THE TOP PANEL. POSITION THE GALVANISED STEEL WALL SUPPORTS CENTRALLY AROUND DOOR FRAME TO GIVE YOUR DESIRED CANOPY HEIGHT. LIFT WOODEN CANOPY ONTO THE WALL BRACKETS ENSURING THE LIP ON THE END OF THE STEEL SUPPORT IS ENGAGED IN THE REBATE WITHIN THE CANOPY CARCASS. CENTRALISE THE CANOPY AROUND DOOR FRAME AND FIT SCREWS "S" TO PREVENT REMOVAL SLIDE ON ZINC TOP COVER FROM FRONT AND SECURE AT WALL WITH SCREWS. (SCREW "W") THE FLASHING PIECE OVERLAPS THE TOP COVER UPSTAND AND LOCATES IN A BRICK COURSE ON THE WALL



HEIGHT TO SUIT
BRICK COURSE



DETAIL A
SHOWING FLASHING
INSTALLATION DETAIL



TITLE WILMSLOW CANOPY WITH ZINC TOP COVER

Canopy Products Ltd

Blackwood Mill
Blackwood Road
Bacup OL13 0PZ
Tel 01706 82 2665
www.canopyproducts.co.uk

